

DIRECTORY

2018-2019



SOFITEL  
HOTELS & RESORTS

MOOREA IA ORA BEACH RESORT



# TABLE OF CONTENTS

## THE RESORT

Sofitel's flagship in the South Pacific

3

## FOOD & BEVERAGE

The French Cuisine expertise, the largest selection of wines & liquors in French Polynesia

9

## ANIMATIONS

Culture, Rhythms, Cuisine

13

## UNIQUE VENUES

for tailor-made events

16

## MICE

Meetings, Incentives, Conferences, Events

22

## CONDITIONS

25





THE RESORT  
Sofitel's flagship in the South Pacific





# REASONS TO LIVE A MEMORABLE EXPERIENCE WITH US !

## **Reason n°1:**

Located on the most beautiful white sand beach in Moorea

## **Reason n°2**

Easy access, only 5 min from Temae airport (MOZ) and Vaiare docks

## **Reason n°3**

#1 on Tripadvisor, awarded with the TripAdvisor "Certificate of Excellence" every year since 2011

## **Reason n°4**

The resort features 112 bungalows including 1 Luxury 2 Bedroom Villa Suite spread in the gardens, directly on the white sand beach or over the water

## **Reason n°5**

Largest overwater bungalows in Moorea

## **Reason n°6**

The "K" restaurant, gourmet dining feet in the sand

## **Reason n°7:**

The Pure restaurant with outdoor terrace dining

## **Reason n°8:**

2 bars: Vue Bar overlooking the infinity pool and Beach Bar

## **Reason n°9:**

Prestigious collaboration with an international organization to protect the lagoon and coral

## **Reason n°10:**

Le Jardin spa experiences, 7 treatments rooms & outdoor plunge pool and 2 jacuzzis

## **Reason n°11:**

Only 5 min from the 18 holes International golf course designed by Jack Nicklaus

## **Reason n°12**

Ia ora Diving, in house PADI dive centre

## **Reason n°13**

Numerous complimentary activities such as badminton, volleyball, ping pong, bocce Balls, kayak, outrigger canoe, snorkelling gear, windsurfing, pedal boat, stand up paddle.

## **Reason n°14**

Dedicated Inspired Meetings Concierge for incredible theming and staging for events

## **Reason n°15:**

LeClub Accorhotels Meeting Planner Program



# SOFITEL MOOREA IA ORA

Sofitel's flagship in the South Pacific, invites you to discover its mixed heritage. Subtle decoration and blended flavours create a rare and refined sophistication in the heart of paradise. Along an infinite palm-fringed white sand beach, the colours of the lagoon will ensure you a *Magnifique* stay.



## LUXURY GARDEN BUNGALOW

Nestled in the middle of tropical gardens, each elegantly Luxury Garden Bungalow is enhanced by a unique blend of French sophistication and contemporary Polynesian design accents. Drawing on a palette of bright colors and precious woods, the personal space includes a generous bathroom with French toiletries and an outdoor patio. Expansive windows offering dramatic garden views from your private terrace can further immerse you in your tropical getaway.

Each bungalow is air conditioned and has a ceiling fan, an additional single bed, a private terrace, an IDD telephone, free Wi-Fi Internet access, satellite LCD TV, a safe, a minibar, a tea and coffee service, an iron and ironing board, bathroom with rain shower, a hairdryer and separate toilets.



## SUPERIOR LAGOON VIEW BUNGALOW

The Superior Lagoon View Bungalows create a soothing retreat, in front of the tropical lagoon.

The bedroom interiors are a perfect blend of French elegance and Polynesian culture. Textures, patterns and bright colors are influenced by the French painter Paul Gauguin within a contemporary yet Tahitian decor.

Each bungalow is air conditioned and has a ceiling fan, a sofa-bed, a private terrace, an IDD telephone, Wi-Fi Internet access (at a charge), satellite LCD TV, a safe, a minibar, a tea and coffee service, an iron and ironing board, bathroom with rain shower, a hairdryer and separate toilets. Two bungalows are wheelchair accessible.



## LUXURY BEACH BUNGALOW

Built directly on the longest white sand beach of the island, each elegant Luxury Beach Bungalow offers a unique panoramic view on the island of Tahiti and the protected turquoise lagoon,

Each Luxury Beach Bungalow is enhanced by a unique blend of French sophistication and contemporary Polynesian design accents. Drawing on a palette of bright colors and precious woods, the relaxed personal space includes a generous bathroom with French toiletries and an outdoor patio.

Each bungalow is air conditioned and has a ceiling fan, an additional single bed, a private terrace, an IDD telephone, free Wi-Fi Internet access, satellite LCD TV, a safe, a minibar, a tea and coffee service, an iron and ironing board, bathroom with rain shower, a hairdryer and separate toilets.



## SUPERIOR OVERWATER BUNGALOW

The Superior Overwater Bungalow create a soothing retreat, above the turquoise waters undisturbed by any jet-ski or motor boat traffic. The bedroom interiors are a tribute to the islands as viewed by the French painter Paul Gauguin. The French decorator Isabelle Maffre used bright colors and soft textures to counterbalance the turquoise and crystal clear blue of the lagoon below. Each bungalow offers a private access to the turquoise lagoon, a great snorkeling, a private terrace with a lagoon view.

Each bungalow is air conditioned and has a ceiling fan, a sofa-bed, a private terrace, an IDD telephone, free Wi-Fi Internet access, satellite LCD TV, a safe, a minibar, a tea and coffee service, an iron and ironing board, bathroom with rain shower, a hairdryer and separate toilets, NESPRESSO®, a solarium, a glass floor viewing panel. One bungalow is wheelchair accessible.

## SUPERIOR HORIZON OVERWATER BUNGALOW

Located at the end of the dock, the Superior Horizon Overwater Bungalow creates an exclusive soothing retreat, above the turquoise waters undisturbed by any jet-ski or motor boat traffic. Fives bungalows bear the name of a Tahitian flower: *Tiare* (the national emblem), *Pitatie* (Jasmine), *Vanira* (Vanilla), *Tains* (Gardenia), *Tipanie* (Frangipani). Each bungalow offers a private access to the turquoise lagoon, a great snorkeling, a private terrace with a unique panoramic view on the island of Tahiti AND exclusive Horizon Benefits: in-room private check-in, 1 bottle of Champagne upon arrival, Mini bar refilled daily with mineral water & sodas, 1 bottle of water and ice at turndown, tea & Nespresso®, VIP Lanvin amenities, 1 hour express ironing, shoe shining, fresh flowers in the bathroom, best table at K restaurant on opening days, personalized letter head paper, « On call » dedicated concierge.

Each bungalow is air conditioned and has a ceiling fan, a sofa-bed, a private terrace, an IDD telephone, free Wi-Fi Internet access, satellite LCD TV, a safe, a minibar, a tea and coffee service, an iron and ironing board, bathroom with rain shower, a hairdryer and separate toilets, NESPRESSO®, a solarium, a glass floor viewing panel. The layout is the same as a Superior Overwater Bungalow.



## LUXURY OVERWATER BUNGALOW

Enjoy the largest overwater bungalows on the island of Moorea. The French decorator Isabelle Maffre used bright colours and soft textures to counterbalance the turquoise and crystal clear blue of the lagoon below. Dip in the crystal-clear lagoon directly from your own deck or from your private solarium undisturbed by any jet-ski or motor boat traffic. Each Luxury Overwater Bungalow offers unique views on the lagoon.

Each bungalow is air conditioned and has a ceiling fan, a private terrace, an IDD telephone, free Wi-Fi Internet access, satellite LCD TV, a safe, a minibar, a tea and coffee service, an iron and ironing board, bathroom with rain shower, a hairdryer and separate toilets, NESPRESSO®, a solarium, a glass floor viewing panel.

## LUXURY HORIZON OVERWATER BUNGALOW

Located at the end of the dock, enjoy the largest overwater bungalows on the island of Moorea. Fives bungalows bear the name of an element: *Te Fenua* (the Earth), *Te Vai* (the Water), *Te Auahi* (the Fire), *Te Auri* (the Metal), *Te Raau* (the Wood). Dip in the crystal-clear lagoon directly from your own platform or enjoy the view from your private solarium away from any jet-ski nor motor boat traffic. Each Luxury Overwater Bungalow offers unique panoramic view on the island of Tahiti AND exclusive Horizon Benefits: in-room private check-in, 1 bottle of Champagne upon arrival, Mini bar refilled daily with mineral water & sodas, 1 bottle of water and ice at turndown, tea & Nespresso®, VIP Lanvin amenities, 1 hour express ironing, shoe shining, fresh flowers in the bathroom, best table at K restaurant on opening days, personalized letter head paper, « On call » dedicated concierge.

Each bungalow is air conditioned and has a ceiling fan, a private terrace, an IDD telephone, free Wi-Fi Internet access, satellite LCD TV, a safe, a minibar, a tea and coffee service, an iron and ironing board, bathroom with rain shower, a hairdryer and separate toilets, NESPRESSO®, a solarium, a glass floor viewing panel. The layout is the same as a Luxury Overwater Bungalow.





## LUXURY VILLA

The unique and magnificent Villa Deluxe is a one of a kind experience that envelops you in style and luxury. This villa honors the French painter François Ravello. It has two separate bedrooms and a spacious living room, an outdoor deck equipped with a jacuzzi<sup>o</sup> and offers a dramatic view on the lagoon and the island of Tahiti. All laid out in a blend of Polynesian and French influences. It's truly the address to have.

This villa is air conditioned and has ceiling fans, IDD telephone, free Wi-Fi Internet access, satellite LCD TV, a safe, a minibar, 2 bathrooms with rain shower (1 bathroom has its own private outdoor bath), hairdryers and separate toilets, an audio HiFi Bose<sup>o</sup> system, Nespresso<sup>o</sup>, a shared living room area, a large outdoor deck with private Jacuzzi<sup>o</sup>, a refrigerator, a 12 bottles wine cellar (at a fee).



| SOFITEL MOOREA IA ORA BEACH RESORT |  |                                 |               |               |       |               |               |                    |                     |                |   |
|------------------------------------|--|---------------------------------|---------------|---------------|-------|---------------|---------------|--------------------|---------------------|----------------|---|
| 112                                | Room categories  | Surface m <sup>2</sup> (sq. m.) |               |               |       | Bedding       |               | Child policy       |                     |                | ♿ |
|                                    |  | Living area                     | Terrace /deck | Outdoor patio | TOTAL | 2 single beds | King Size Bed | 2 adults + 1 child | Bedding for 1 child | Free baby crib |   |
| 51                                 | Bungalow jardin deluxe<br><i>Luxury Garden Bungalow</i>                              | 46                              | 10            | 3.8           | 59.8  | 5             | 46            | Yes                | Rollaway bed        | Yes            | 0 |
| 10                                 | Bungalow supérieur vue lagon<br><i>Superior Lagoon View Bungalow</i>                 | 31                              | 11            | 0             | 42    | 2             | 8             | Yes                | Sofa bed            | Yes            | 2 |
| 11                                 | Bungalow plage deluxe<br><i>Luxury Beach Bungalow</i>                                | 46                              | 10            | 3.8           | 59.8  | 2             | 9             | Yes                | Rollaway bed        | Yes            | 0 |
| 15                                 | Bungalow sur pilotis supérieur<br><i>Superior Overwater Bungalow</i>                 | 31                              | 11            | 0             | 42    | 5             | 10            | No                 | No                  | No             | 1 |
| 5                                  | Bungalow horizon sur pilotis supérieur<br><i>Superior Horizon Overwater Bungalow</i> | 31                              | 11            | 0             | 42    | 0             | 5             | No                 | No                  | No             | 0 |
| 14                                 | Bungalow sur pilotis deluxe<br><i>Luxury Overwater Bungalow</i>                      | 51                              | 24            | 8             | 83    | 5             | 9             | No                 | No                  | No             | 0 |
| 5                                  | Bungalow horizon sur pilotis deluxe<br><i>Luxury Horizon Overwater Bungalow</i>      | 51                              | 24            | 8             | 83    | 0             | 5             | No                 | No                  | No             | 0 |
| 1                                  | Villa deluxe<br><i>Luxury Villa</i>  | 131.2                           | 23.3          | 7.6           | 161.2 | 0             | 2             | Yes                | Sofa bed            | Yes            | 0 |

**In-room equipments**

Air conditioning  Overhead fans  TV  Glass Floor in overwater bungalows  Hair Dryer  Telephone  Wi-Fi Internet access  Mini bar (2 beers, sodas, waters) refilled daily  Tea/Coffee Facility  Ironing equipment  Slippers  Bathrobe  Rain shower  Mosquito protection  Safety box  Shampoo & Soap  Toothbrush  Snorkel Set on request

# HOTEL INFORMATION



## ACCESS

The following airline companies serve the international airport of Faaa Tahiti: Air Caledonie International, Air France, Air New Zealand, Air Tahiti Nui, Hawaiian Airlines and Lan Airlines.

Moorea is just 5 minutes by flight or 30 minutes by fast ferry from Tahiti.

Sofitel Moorea Ia Ora Beach Resort is 5 minutes away from the Temae Airport or the Vaiare ferry docks by taxis, public buses or transfers arranged by your travel agent,

## AWARDS & ACCOLADES



Top Resort in Australia and Pacific: Reader' Choice Award 2016



2013 Luxury Honeymoon Hotel

2014 Luxury Romantic Hotel

2015 Luxury Beach Resort & Luxury Hotel Best Scenic Environment



Certificate of Excellence since 2011



Local certification for excellent quality of the lagoon waters



Planet 21 Gold Certification





# FOOD & BEVERAGE

The French Cuisine expertise, the largest selection of  
wines & liquors in French Polynesia



# FOOD



## PURE RESTAURANT

Set in a contemporary decor, Pure enables you to enjoy your meal in a relaxed ambiance. Chef Marc Lintanf proposes you to taste:

### BREAKFAST BUFFET

American: 3,900 XPF \*

### BRUNCH

Magnifique brunch: 7,400 XPF\*

### LUNCH

Menu 2 courses or salad bar: 5,400 XPF\*

### DINNER

Set Menu (max 119 pax) 10,000 XPF\*

Buffet - Themed interactive cuisine (min 120 pax) 10,000 XPF\*

\*all including non alcoholic drinks



Menus and suggestions upon request.

*Unless otherwise specified, prices are per person and include taxes and service.*



# FOOD



## K RESTAURANT

Invitation for a world class experience. Enjoy the cuisine of the internationally acclaimed Chef Guillaume Burlion who proposes you to taste:

### LUNCH & DINNER

4 course menu: 11,500 XPF\*  
Wine Pairing - Price 4 800 XPF

Tasting (7 course) menu: 16,500 XPF\*  
Wine Pairing - Price 6 900 XPF

\*all including non alcoholic drinks



Menus and suggestions upon request.

*Unless otherwise specified, prices are per person and include taxes and service.*

# COCKTAIL PARTY

Choose below our drink packages for your event :



## Classic Open Bar (1hour)- Price: 2 500 XPF

Red, white & rosé wine  
Local beer,  
Soft drink, Mineral water,  
Fruits juice,

### Classic & Premium Wines

Red, white & rosé wine,  
Sommelier choice



## Premium Open Bar (1hour)- Price 4 000 XPF

Liquors,  
Mojito Cocktail  
Red, white & rosé wine  
Local beer,  
Soft drink, Mineral water,  
Fruit juice,

### Premium Liquors

**Whisky:** Johnie Walker Black, Label or Jack Daniel's

**Gin:** Tanqueray, Bombay Sapphire

**Vodka:** Smirnoff, Greygoose,

**Rhum:** Captain Morgan, Havana Club,

**Tequila:** Don Julio



## Polynesian Open Bar (1hour)- Price 3 300 XPF

Tahiti white and amber agricultural rum, local beers,  
Tahiti wine, fresh coconut, fresh exotic fruit juice,  
pina colada and Ti-punch



## Champagne Welcome (30min) - Price 2 990 XPF

Coutelas Amaury Brut Origin

### Hors d'oeuvres & mini pastries packages

We invite you to choose your hors-d'oeuvres and/or mini-pastries package:

Piece: 450 XPF

3 pieces: 1,200 XPF

5 pieces: 1,900 XPF

7 pieces: 2,450 XPF

12 pieces: 4,500 XPF

*Unless otherwise specified, prices are per person and include taxes and service.*



A man with intricate tattoos on his chest and arms is performing a fire dance. He is wearing a costume made of large green leaves. He is holding a flaming torch in his right hand and another flaming object in his left hand. The background is dark, and the scene is lit with warm, orange and yellow light from the fire.

# ENTERTAINMENT

Culture, Rhythms, Cuisine



# ENTERTAINMENTS



## Culture

|   |                       |
|---|-----------------------|
| Ukelele trio (per hour)   | 15,000 XPF            |
| Ukelele trio (3 hours)  | 45,000 XPF            |
| Traditional Polynesian show (45min)                             | 120,000 XPF           |
| Fire dance and musicians (20 min)                               | 60,000 XPF            |
| Decoration Package  | Upon request          |
| Centrepieces  | From 6,500 XPF/ piece |
| Wedding chair rental  | 2,500 XPF / piece     |
| Set-up fee will be charged according to your group requirements |                       |

## Rhythms

|                             |                 |
|-----------------------------|-----------------|
| Acoustic guitar (2 hours)   | 30,000 XPF      |
| Live Duo                    | 60,000 XPF      |
| Live music group (2 hours)  | 200,000 XPF     |
| Latino dance band (2 hours) | 150,000 XPF     |
| DJ (per 3 hours)            | 120,000 XPF     |
| Fireworks (5 min)           | 400,000 XPF     |
| Jazz quartet (2 hours)      | 150,000 XPF     |
| Sound system                | From 27,000 XPF |
| Karaoke Pack                | 57,000 XPF      |
| Saxophone solo (2 hours)    | 30 000 XPF      |





# ENTERTAINMENTS

## Cuisine



Master Class with the Executive Chef Guillaume Burlion. Enjoy a 60 minutes cooking lesson with the starred Executive Chef Guillaume Burlion:

Cooking of one recipe by the Chef Guillaume Burlion followed by a tasting

One glass of champagne per person

One souvenir picture

One chef's hat and one cooking apron offered

9,900 XPF

Master Class Mixology (per person)

7,500 XPF



## Kids Corner

With a clown; a show for the little ones that will also make the big ones laugh with juggling, unicycles, balloon, stories, clown gags, and lots of musical surprises! (2 hours)

45,000 XPF

UNIQUE VENUES  
for tailor made events





# TAILOR MADE EVENTS

Sofitel Moorea la Ora Beach Resort is the ultimate Groups & Incentive destination boasting 112 luxurious bungalows and the most beautiful beachfront location of the island.

Flexible enough to cater for 426 guests, Sofitel's meeting options are endless. Renowned for its creative events and themed dinners, the hotel specialises in water, culture and unique adventure options.

With the protected lagoon as a stunning backdrop, it is all but guaranteed that an audience will be left wowed and with memories that last. Theme dinner options include a Luxury Pool & Beach Party, Interactive Cuisine, and traditional Tahitian « Ahimaa » (Polynesian Feast).

Available capacity (in pax):

| 5 unique venues     | ARRANGEMENT |          |         |
|---------------------|-------------|----------|---------|
|                     | Banquet     | Cocktail | Theatre |
| K                   | 100         | 250      | 50      |
| PURE                | 150*        | 350      | 80-160  |
| BEACH BAR           | -           | 100      | -       |
| PRIVATE TAHITI DECK | 15          | 50       | -       |
| POOL                | 60          | 200      | -       |

\* 100 pax (room 1) + 50 pax (room 2) + 120 pax (terrace with marquee rental)

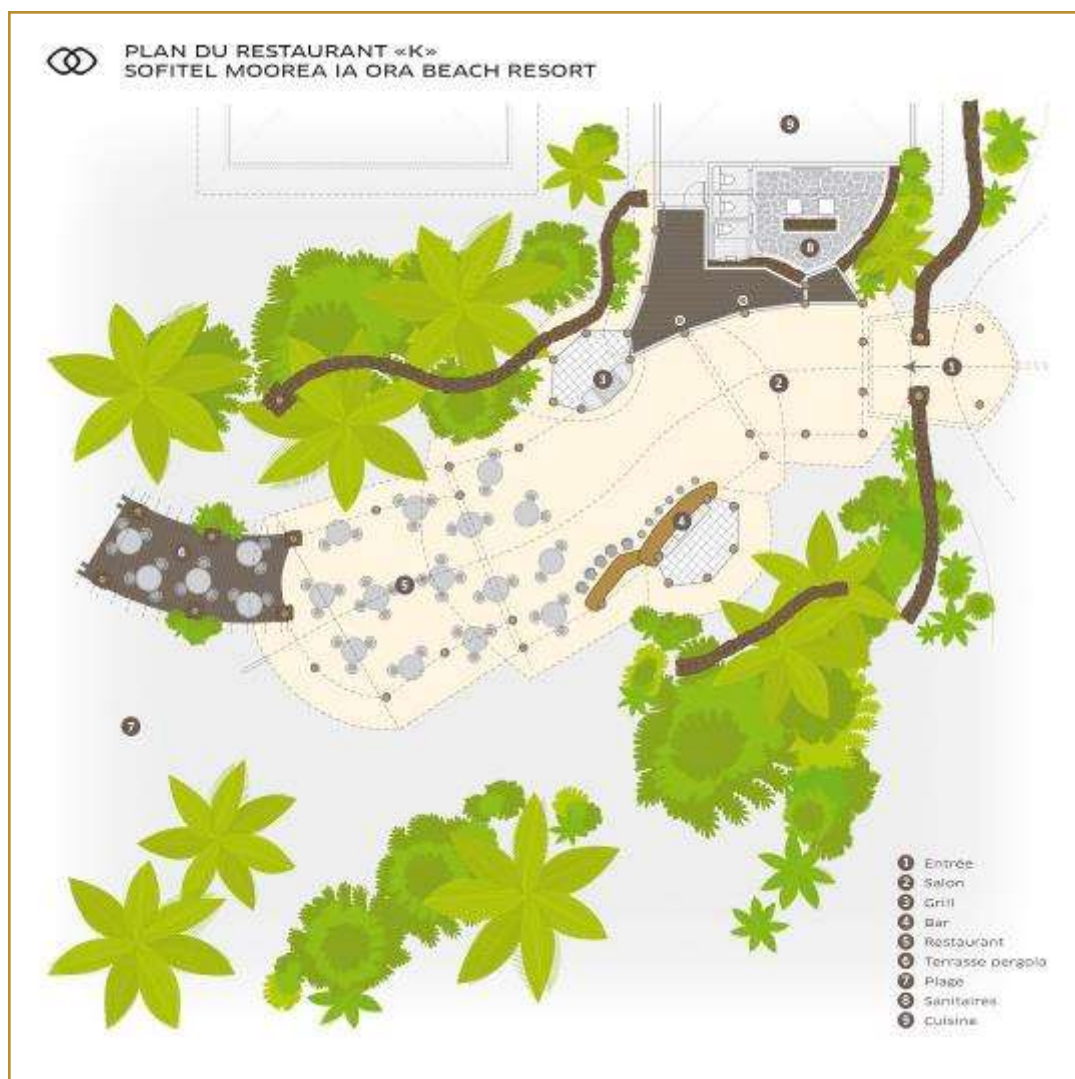
# EVENT VENUES

## K RESTAURANT

Enjoy the world class cuisine by chef Guillaume Burlion in an intimate setting. This fine-dining restaurant offers a mythical sight of the lagoon and the island of Tahiti in an authentic Polynesian setting made of Kahaia endemic wood, feet in the white sand.

This venue is convenient for :

- Lunch or dinner (from casual barbecue or beach party to a sophisticated and elegant theme dinner)
- Cocktail
- Meeting & seminars (specific equipment in option)





## SEVERAL AREAS FOR UNIQUE VENUES...

### PURE RESTAURANT

Set in a contemporary decor with an outdoor terrace, on the edge of the protected lagoon, offering a unique view on the island of Tahiti, Pure enables you to enjoy your meal in a relaxed ambiance.

This venue is convenient for :

- Lunch or dinner (Interactive Cuisine)
- Cocktails
- Meeting & seminars (specific equipment in option)

### BEACH BAR

Live a magnifique experience on the longest and nicest white sand beach of the island.

This outdoor venue is convenient for :

- Lunch (casual barbecue or beach party)
- Cocktails
- Champagne Welcome

### PONTOON

Over the water, enjoy the polynesian breeze and admire the sparkling silhouette of Tahiti .

This outdoor venue is convenient for :

- Champagne Lounge
- Boudoir

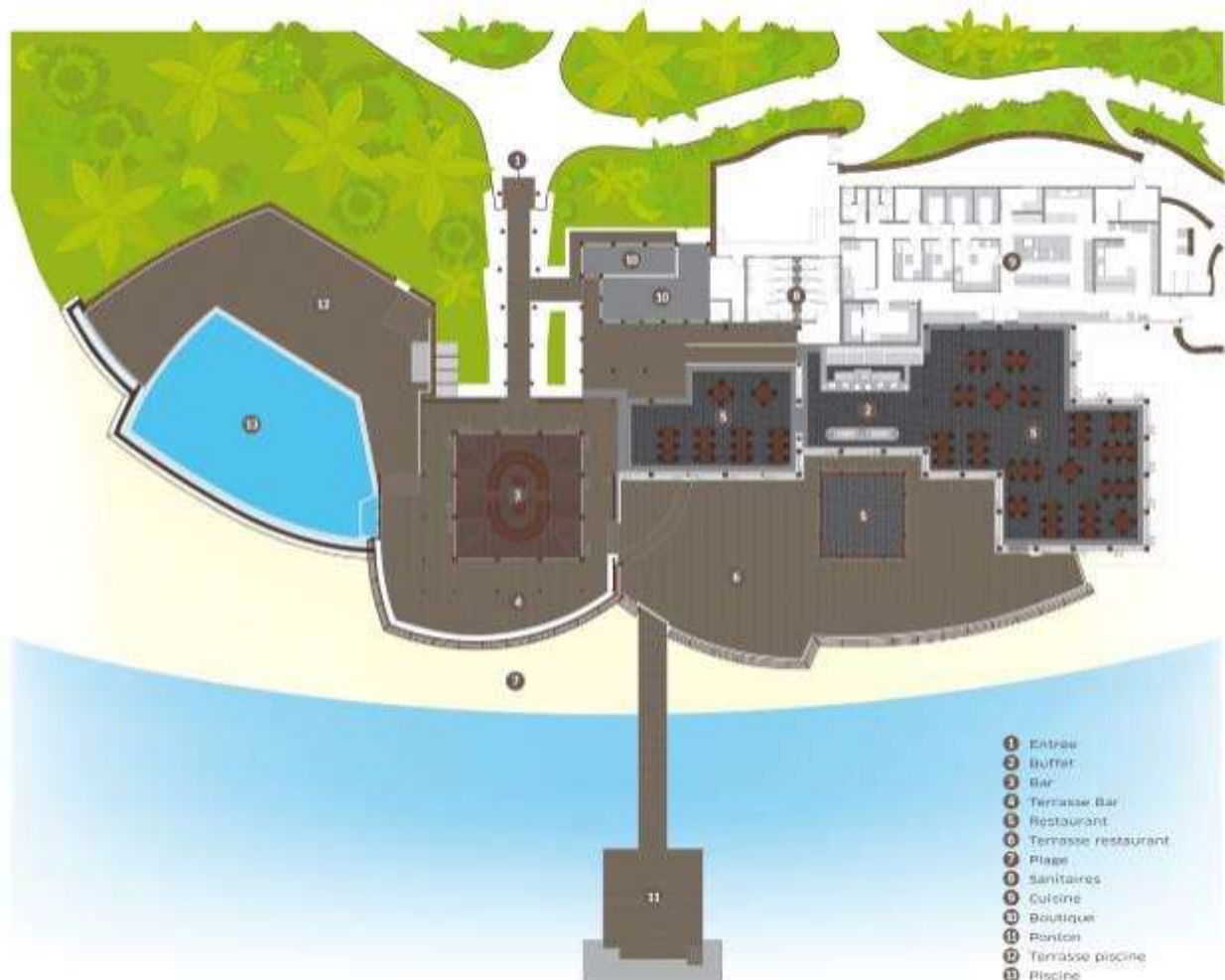
### POOL

Facing Tahiti with its beach, close to the bar, entertain your guests during a festive evening.

This outdoor venue is convenient for :

- Luxury Pool Party

PLAN TERRASSE, PISCINE, RESTAURANT, BAR, BOUTIQUE  
SOFITEL MOOREA IA ORA BEACH RESORT



# SIGNATURE EVENTS



ENTERTAINMENT



CABARET EVENING



POLYNESIAN EVENING



INTERACTIVE CUISINE



K RESTAURANT ON THE BEACH



OFYR® Barbecue



# LES EXCEPTIONNELLES



POOL PARTY



BEACH PARTY



BOUDOIR NIGHT



CIGAR CLUB



MICE

Meetings, Incentives, Conferences, Events







# MEETING ROOM PACKAGE

## HALF DAY PACKAGE 6 500 XPF / person.

Meeting room rental ;

Morning coffee break (including coffee/tea, fruit juice, mineral water, cookies or mini-pastries) ;

Lunch (2 course menu at Bar Vue, beverages excluded) ;

Set up: paper, pencil, 0,5L bottle of water

## FULL DAY PACKAGE 9 000 XPF / person.

Meeting room rental ;

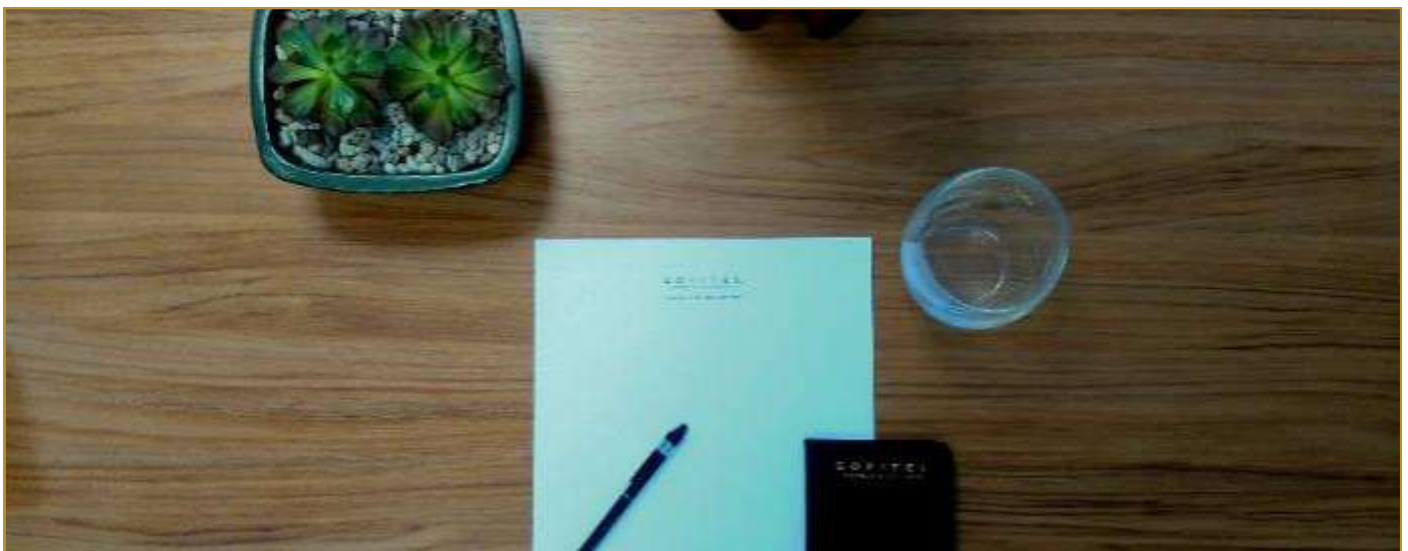
Morning coffee break (including coffee/tea, fruit juice, mineral water, cookies or mini-pastries) ;

Lunch (2 course menu at Bar Vue, beverages excluded) ;

Afternoon coffee break (including coffee/tea, fruit juice, mineral water) ;

Set up: paper, pencil, 0,5L bottle of water

## VIDEO CONFERENCE PACK 46 000 XPF



# FOOD & BEVERAGE PACKAGES



## COFFEE BREAK

### **Classic Coffee Break - Price 900 XPF**

1 Coffee & tea

Fruit Juice (25cl)

1/2 bottle mineral or sparkling water

### **Superior Coffee Break - Price 1 500 XPF**

1 Coffee & tea

Fruit Juice (25cl)

1/2 bottle mineral or sparkling water

2 pastries or sweets

### **Premium Coffee Break - Price 2 500 XPF**

1 Coffee & tea

Fruit Juice (25cl)

1/2 bottle mineral or sparkling water

3 sweet or savory canapés

Ice creams and sorbet (trolley service)



# CONDITIONS

2018-2019

## **AMPLIFICATION**

Amplified sound is not permitted in Pure and K restaurants.

## **BUFFETS**

Banquet buffets offer limited quantities of food. Food preparation is based on one serving per person. Additional servings may be purchased at additional charge. Please note twenty (20) person minimum required for buffets. Buffets have a two (2)-hour time limit due to the weather elements and effects on food. Food can be refreshed for extensions on this time limit at a cost-per-person.

## **CORPORATE BRANDING**

Signs and hospitality/registration tables in public areas, the arrival pavilion, or adjacent to guest suites are prohibited. Signs outside hospitality suites or function space are to be professionally printed no larger than 20" x 24" and approved by the Resort. The posting of any items (posters, signs, banners etc.) on any function room walls or doors is strictly prohibited - arrangements can be made for easels. Participant nametags are permitted in private meeting and event locations and are prohibited in public areas.

## **CURFEWS**

Please note the curfew of 10:00 p.m. for all outdoor functions and 12:00 a.m. (midnight) for all indoor functions.

## **EQUIPMENT**

Audio visual, lighting and entertainment equipment is available through our Events Department located at the Resort. Rental and set-up fees apply.

## **FOOD & BEVERAGE**

All food and beverage items must be purchased exclusively from Sofitel Moorea la Ora Beach Resort and consumed in the designated function areas. Sofitel Moorea la Ora Beach Resort is the only licensed authority to serve and sell alcoholic beverages on the grounds, therefore outside alcoholic beverages are not permitted on Resort property.

## **GUARANTEE**

A guaranteed guest count is required twenty-one (21) days prior to the function. We will prepare for up to five percent (5%) over your guaranteed guest count for functions of 100 people or more. You will be charged for your guaranteed guest count or your actual guest attendance, whichever is greater. If we are not advised of a guaranteed count, the tentative number of guests will become the guaranteed count.

## **MEAL SUBSTITUTIONS**

It is our intent to accommodate any requests according to dietary requirements. These must be provided seven (7) business days prior to the function. Requests received within the seven (7) business days period will be accommodated at an additional charge.

## **MENU SELECTIONS**

If menu selections are not completed a minimum of three (3) weeks prior to the function date, prices may be subject to change.

## **OUTDOOR EVENTS**

The Resort reserves the right to make a final decision to move any outdoor function to an inside function room to expedite the setup due to inclement weather. The decision to move a function must be made no less than three (3) hours in advance of the scheduled start time.

## **SECURITY**

The Resort will not be responsible for the damage or loss of any equipment or articles left at the Resort prior to, during or following a banquet function. Arrangements must be made in advance for security of merchandise, valuables, or articles set up for display.

## **SERVICE CHARGE & TAXES**

In 2018, all food and beverage prices are subject to the prevailing tax and service charge.

## **STORAGE & PACKAGES**

All incoming packages should be addressed with the name of the Resort's Conference Services Manager, as well as the name of the group and the dates of your program. Please advise us of large shipments at least two (2) months prior to the event, as it may be necessary to arrange storage.

S O F I T E L  
HOTELS & RESORTS

MOOREA IA ORA BEACH RESORT

*Life is Magnifique in Moorea!*

Please contact us for a detailed proposal :

@: [h0547-SB2@sofitel.com](mailto:h0547-SB2@sofitel.com)

T: + 689 40 86 66 05

